



# FOR STARTERS



GUIDE PRICE  
£485,000

## MAIN COURSE

\*An Executive Redrow Home of Exceptional Quality - Stunning Inside and Out\*

Positioned on the edge of Meon Vale and within easy reach of the Cotswolds, this absolutely beautiful executive detached Redrow residence offers luxury living in a highly sought-after location. From the moment you arrive, the property makes a striking impression: a handsome frontage, immaculate lawned fore garden and a private driveway providing side-by-side parking for two vehicles.

Step through the front door into a grand, light-filled hallway, where a clear line of sight straight through to the garden immediately sets the tone for the space and quality throughout. To the left, the stunning living room boasts a generous walk-in bay window and an exceptional bespoke media wall with an electric feature fireplace – a standout focal point meticulously created by the current owners.

To the rear, the home opens into a luxurious open-plan kitchen and dining room, the heart of the property. This impressive space includes fully integrated appliances, a beautifully designed central island with breakfast bar (added by the owners), and ample room for a six-seater dining table. The entire room is bathed in natural light thanks to the elegant french doors with full-height glazed side panels, all overlooking the garden. Off the kitchen, a separate utility room offers space for a washing machine, an additional sink and a tastefully appointed guest WC, along with a secondary door giving direct access to the garden.

The first floor continues to captivate with three exceptional double bedrooms, each with its own en-suite. The primary suite is truly impressive – a generous bedroom with a walk-in bay window, leading through to a dedicated dressing area complete with fitted wardrobes and spotlights. From here, step into the exquisite en-suite bathroom, featuring a large walk-in shower and a separate bathtub positioned opposite, creating a spa-like retreat.

The second bedroom offers excellent proportions, fitted wardrobes, and a contemporary en-suite shower room, while the third bedroom – also a full double

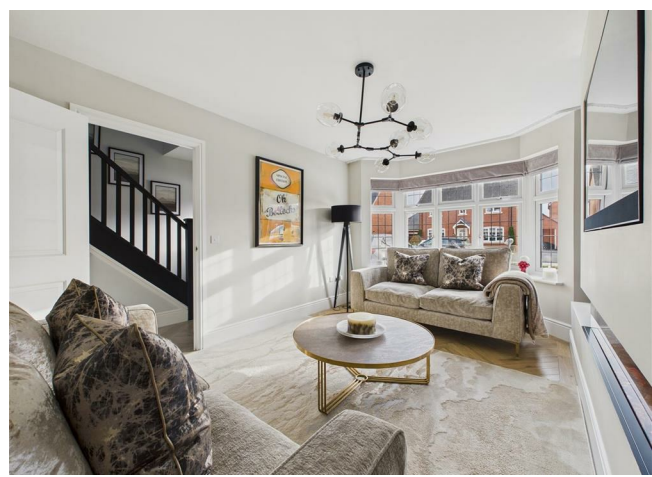


– benefits from yet another immaculately presented modern en-suite shower room.

Outside, the private rear garden is a rare and remarkable feature. Beautifully landscaped, it offers a perfect blend of patio entertaining space, a lawned area, raised decking to the rear, and even a large pond, a wonderful focal point that enhances the sense of tranquility.

This home has been finished to an exceptional standard both inside and out, offering stylish, modern living in a superb location close to countryside walks, amenities and excellent transport links.

A property of this calibre is incredibly hard to find – early viewing is strongly recommended.



## KEY INGREDIENTS



Tenure  
Freehold



Council Tax  
Band - E



EPC  
Band - B



East Facing



Mains Gas, Electric,  
Water, Drainage

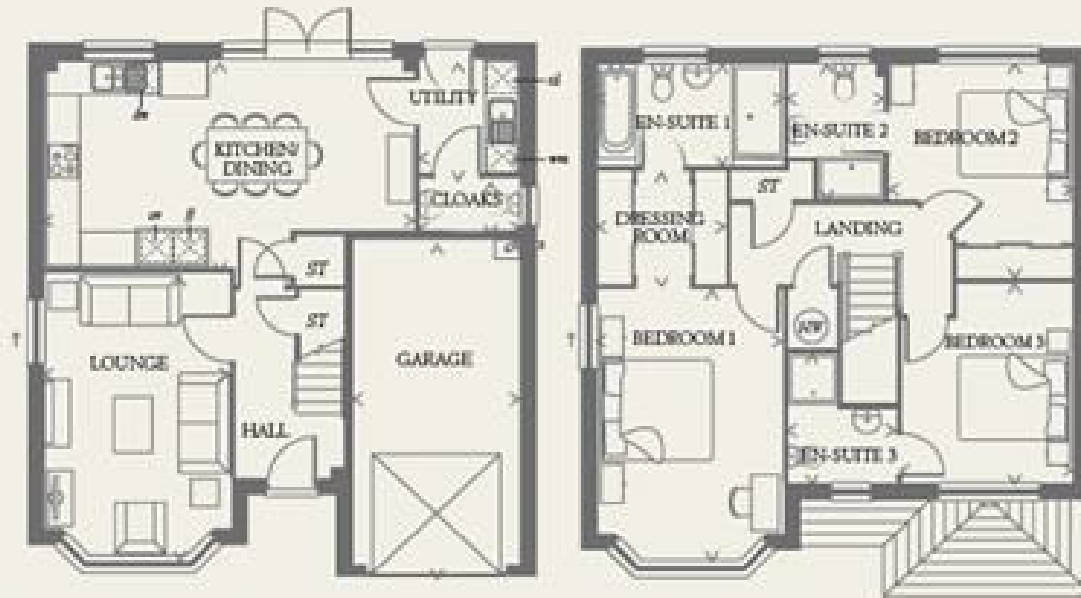


Gas Central Heating



Tudor Grange  
Academy Meon Vale

WHY NOT TAKE  
A LOOK INSIDE?  
GIVE US A CALL  
01789 414222



### GROUND FLOOR

|                    |                |               |
|--------------------|----------------|---------------|
| LOUNGE             | 16'5" x 10'10" | 5.00 x 3.29 m |
| KITCHEN/<br>DINING | 21'8" x 12'1"  | 6.60 x 3.68 m |
| UTILITY            | 6'8" x 5'10"   | 2.02 x 1.78 m |
| CLOAKS             | 5'10" x 3'1"   | 1.78 x 0.94 m |
| GARAGE             | 19'4" x 9'10"  | 5.98 x 3.00 m |

### FIRST FLOOR

|            |                 |               |
|------------|-----------------|---------------|
| BEDROOM 1  | 15'10" x 10'10" | 4.82 x 3.29 m |
| EN-SUITE 1 | 10'10" x 5'11"  | 3.29 x 1.80 m |
| DRESSING   | 7'6" x 6'8"     | 2.28 x 2.03 m |
| BEDROOM 2  | 12'7" x 10'9"   | 3.84 x 3.27 m |
| EN-SUITE 2 | 7'11" x 5'8"    | 2.41 x 1.73 m |
| BEDROOM 3  | 11'7" x 10'0"   | 3.52 x 3.04 m |
| EN-SUITE 3 | 7'7" x 6'5"     | 2.30 x 1.96 m |

**FOR MORE INFO AND  
TO SEE OUR OTHER  
LOVELY PROPERTIES  
CHECK OUT OUR WEBSITE**

**MOVWITHEDWARDS.CO.UK**

**HAVE YOU GOT  
A PROPERTY  
TO SELL?  
WE'D LOVE TO  
HAVE A CHAT  
01789 414222**

**DID YOU KNOW WE ALSO  
DO MORTGAGES.  
FOR FREE ADVICE  
SPEAK TO  
ONE OF OUR  
CONSULTANTS**

